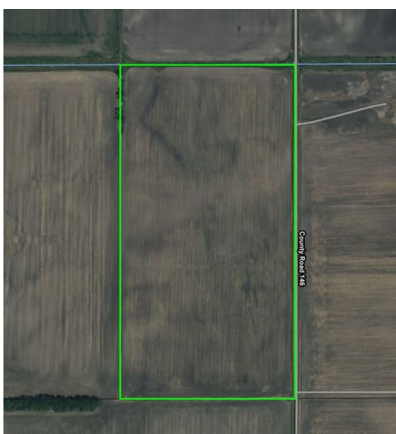




# Sollie Realty Listing # 4715 Images



Bearden silty clay loam, 0 to 2 percent slopes	41.6	51.3%
Rockwell fine sandy loam, 0 to 1 percent slopes	1.2	1.5%
Fargo silty clay loam, 0 to 1 percent slopes	23.2	28.6%
Arveson loam, 0 to 1 percent slopes	3.5	4.3%
Ulen fine sandy loam, 0 to 2 percent slopes	6.5	8.0%
Augsburg and Wheatville soils, 0 to 2 percent slopes	1.9	2.3%
Wheatville loam, 0 to 2 percent slopes	3.3	4.1%

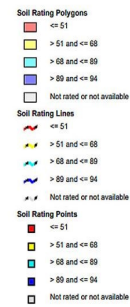
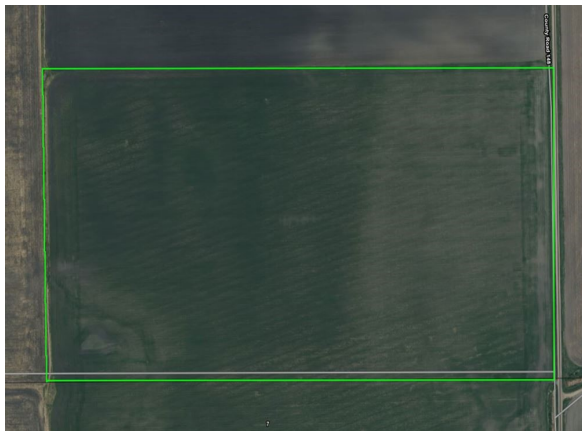
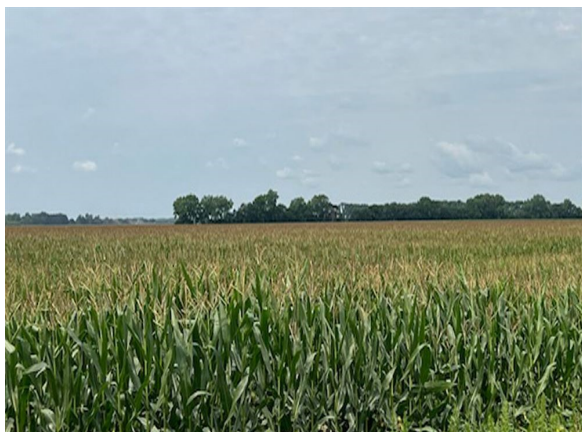
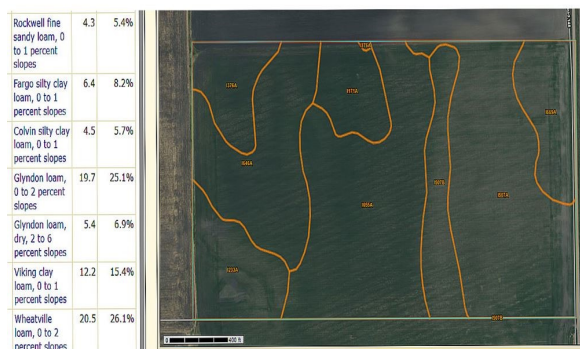


- Soils**
- Soil Rating Polygons**
- <= 51
  - > 51 and <= 58
  - > 58 and <= 61
  - > 61 and <= 90
  - > 90 and <= 94
  - Not rated or not available
- Soil Rating Lines**
- <= 51
  - > 51 and <= 58
  - > 58 and <= 61
  - > 61 and <= 90
  - > 90 and <= 94
  - Not rated or not available
- Soil Rating Points**
- <= 51
  - > 51 and <= 58
  - > 58 and <= 61
  - > 61 and <= 90
  - > 90 and <= 94
  - Not rated or not available
- Water Features**
- Streams and Canals





# Sollie Realty Listing # 4715 Images





# Sollie Realty Listing # 4715 Images

PLEASANT VIEW PLAT

R-46-WT-145-N

GREEN MEADOW PLAT

