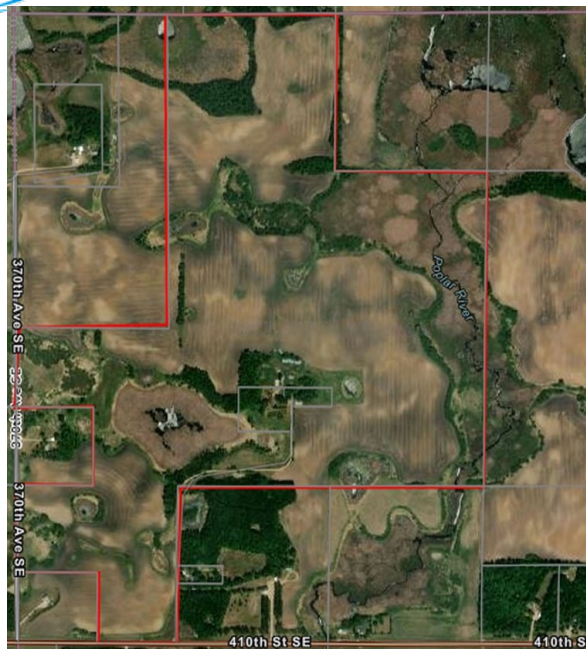




Sollie Realty Listing # 4617 Images





Sollie Realty Listing # 4617 Images



Polk County, Minnesota (MN119)

Map Unit Symbol	Map Unit Name	Acres in AUI	Percent of AUI
38B	Waukon loam, 2 to 6 percent slopes		
38C2	Waukon, moderately eroded Langhelt complex, 6 to 12 percent slopes		
38D2	Waukon, moderately eroded Langhelt complex, 12 to 20 percent slopes		
45C	Haddock loamy fine sand, 6 to 12 percent slopes		
45E	Haddock loamy fine sand, 12 to 30 percent		



Polk County, Minnesota (MN119)

Map Unit Symbol	Map Unit Name	Acres in AUI	Percent of AUI
38B	Waukon loam, 2 to 6 percent slopes		
38C2	Waukon, moderately eroded Langhelt complex, 6 to 12 percent slopes		
38D2	Waukon, moderately eroded Langhelt complex, 12 to 20 percent slopes		
540	Seeleyville-Seeleyville, ponded, complex, 0 to 1 percent slopes		
544	Cathro muck, occasionally		

